

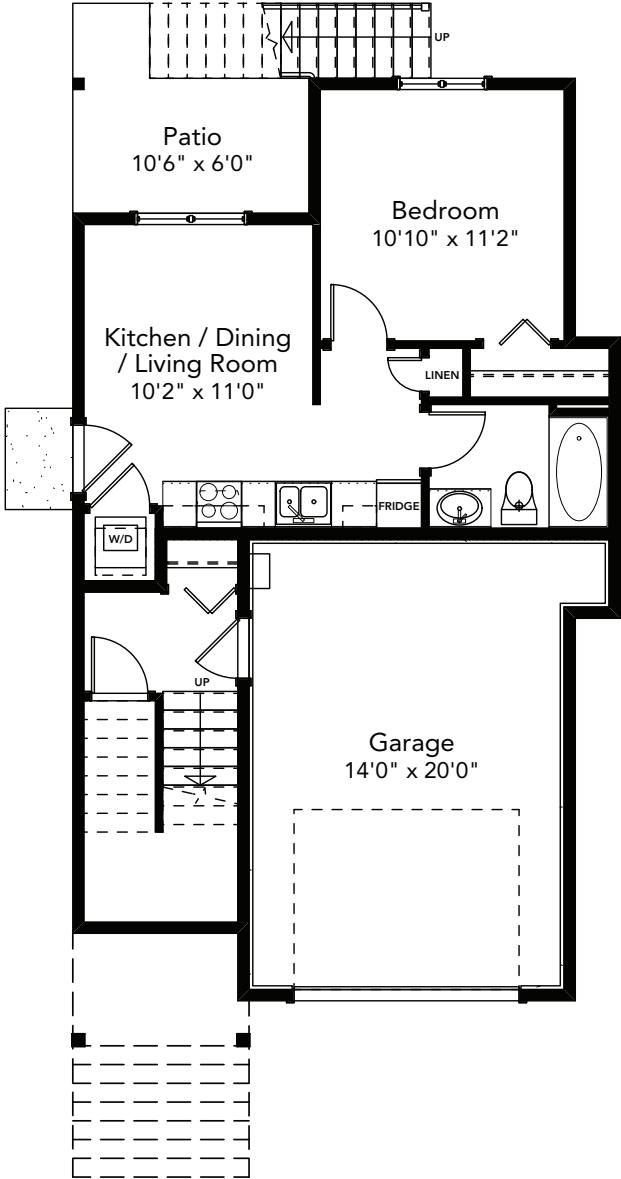
Lot 10 | 1528 Atlas Drive
4 BEDROOMS | 2.5 BATH
+ 1 BEDROOM SUITE

SPECIFICATIONS

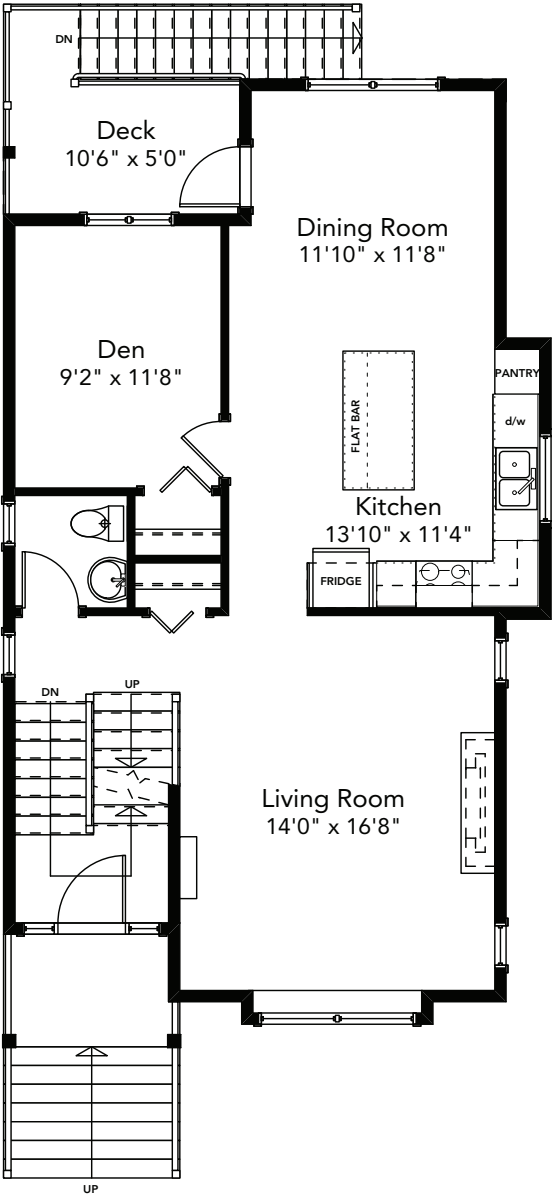
LOWER	533	SQ. FT.
MAIN	856	SQ. FT.
UPPER	795	SQ. FT.
TOTAL	2,184	SQ. FT.



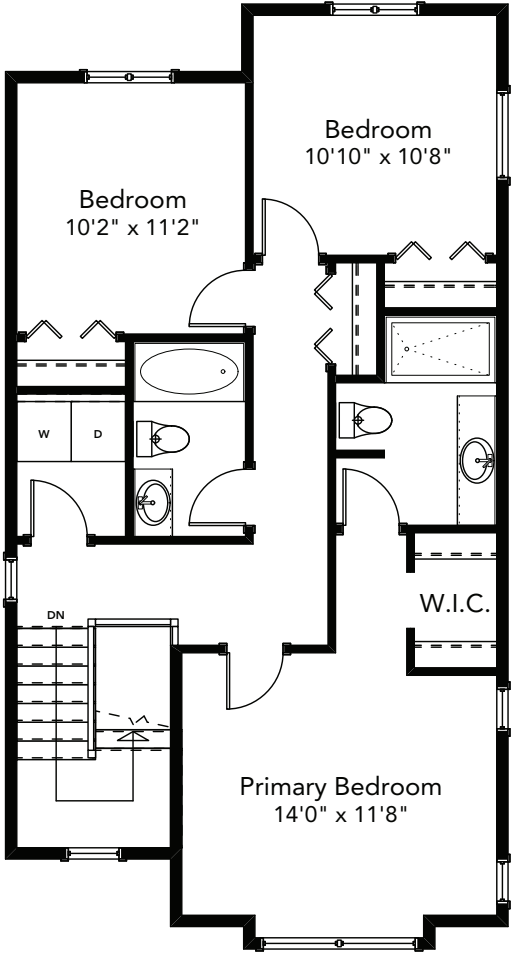
These plans and renderings are not intended to fully or completely represent the final product. Plans and renderings provided are preliminary layouts only for general review of type and size by client group. All sizes are approximate and subject to revision as design development proceeds. Details including but not limited to colours, interior and exterior details, landscaping, existence and location of retaining walls, views, and type and location of development on surrounding properties are all subject to change. Renderings are an artistic representation of the proposed home.



LOWER FLOOR 533 SQ.FT.



MAIN FLOOR 856 SQ.FT.



UPPER FLOOR 795 SQ.FT.