

Home 40
1503 Atlas Dr.
2 BEDROOMS | 2.5 BATH
+ DEN

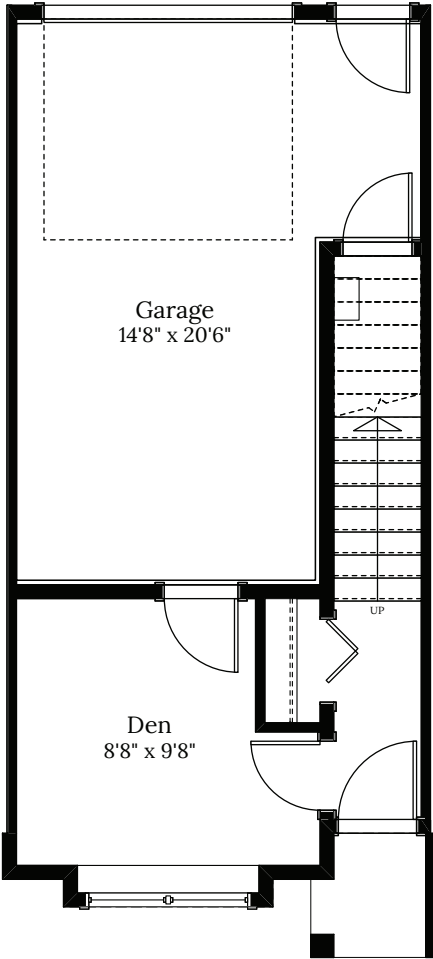
SPECIFICATIONS

LOWER	194	SQ. FT.
MAIN	507	SQ. FT.
UPPER	481	SQ. FT.
TOTAL	1,182	SQ. FT.

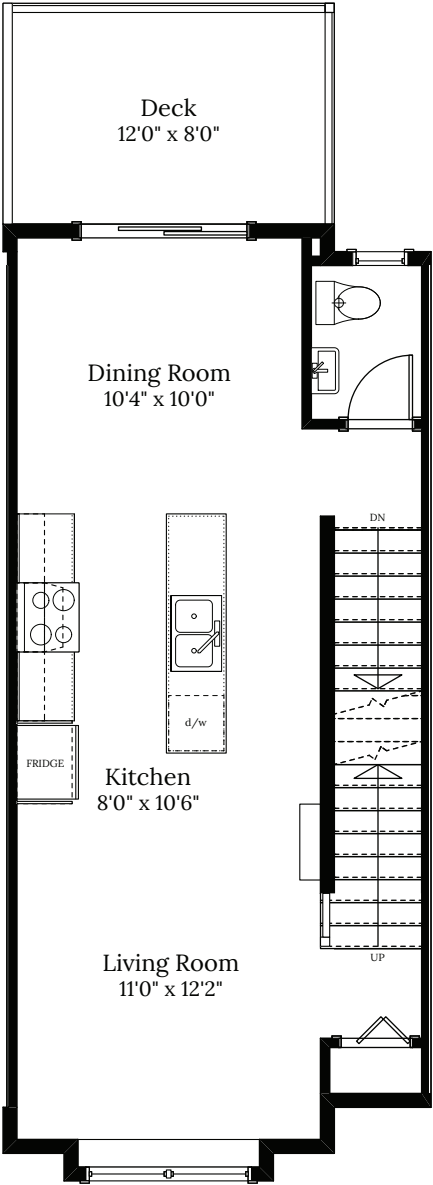


These plans and renderings are not intended to fully or completely represent the final product. Plans and renderings provided are preliminary layouts only for general review of type and size by client group. All sizes are approximate and subject to revision as design development proceeds. Details including but not limited to colours, interior and exterior details, landscaping, existence and location of retaining walls, views, and type and location of development on surrounding properties are all subject to change. Renderings are an artistic representation of the proposed home.

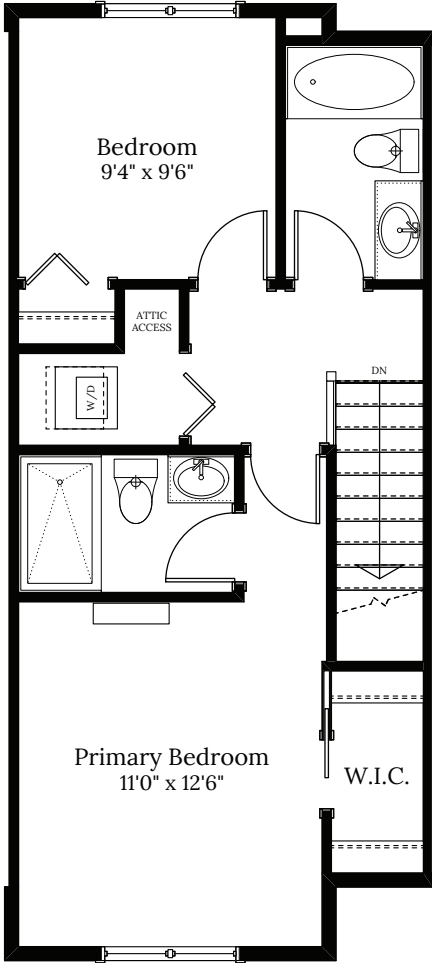
Home 40 | 1503 Atlas Dr. | Talus



LOWER FLOOR 194 SQ.FT.



MAIN FLOOR 507 SQ.FT.



UPPER FLOOR 481 SQ.FT.