



Canmore Premium

3 Bedroom | 3.5 Bath
+ Media Room + Den

Specifications

LOWER	596	SQ. FT.
MAIN	596	SQ. FT.
UPPER	671	SQ. FT.
TOTAL	1,863	SQ. FT.



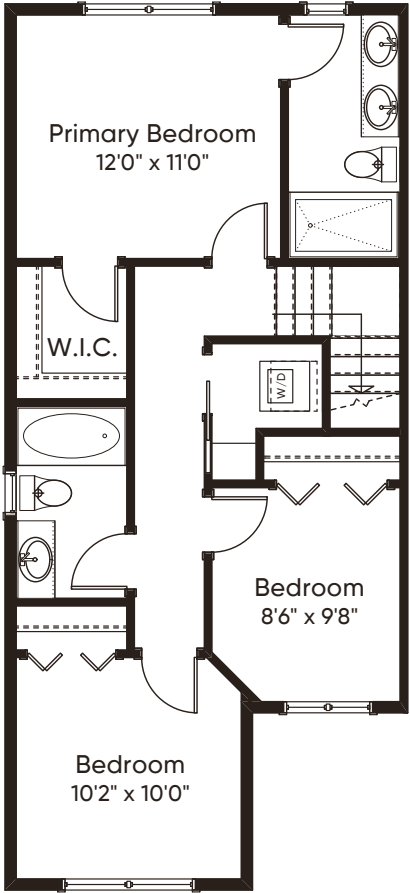
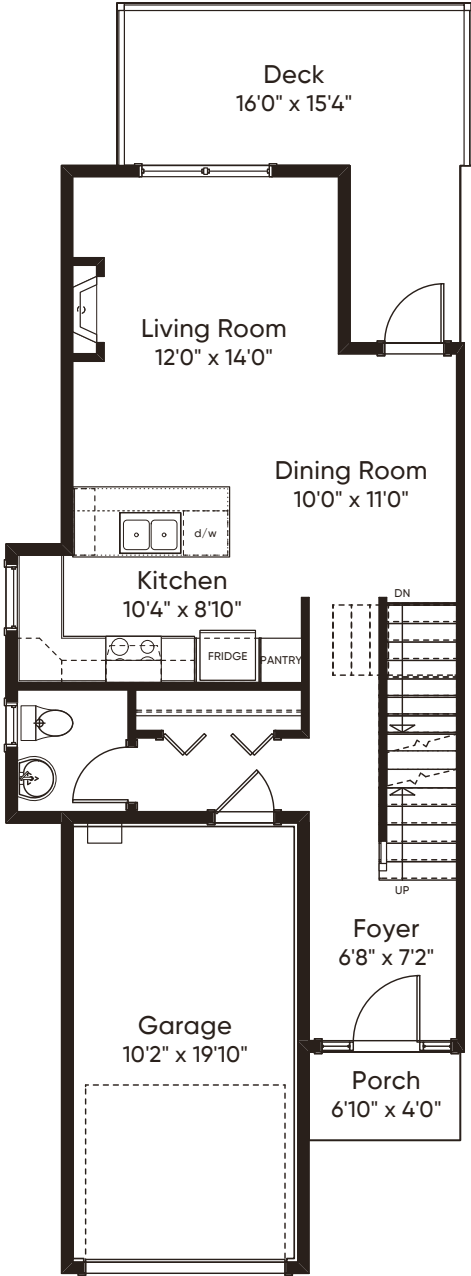
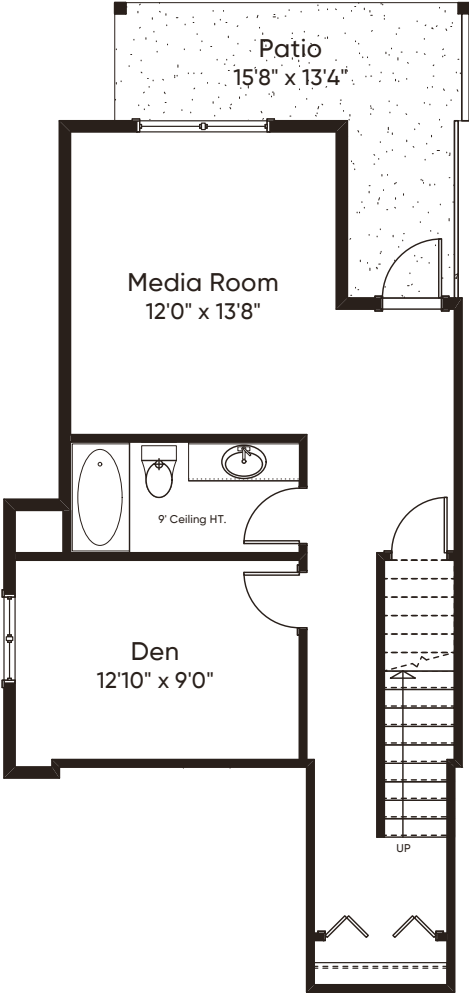
Available on Units:



These plans and renderings are not intended to fully or completely represent the final product. Plans and renderings provided are preliminary layouts only for general review of type and size by client group. All sizes are approximate and subject to revision as design development proceeds. Details including but not limited to colours, interior and exterior details, landscaping, existence and location of retaining walls, views, and type and location of development on surrounding properties are all subject to change. Renderings are an artistic representation of the proposed home.

Canmore Premium

BEDFORD TOWNHOMES



LOWER FLOOR 596 SQ.FT.

MAIN FLOOR 596 SQ.FT.

UPPER FLOOR 671 SQ.FT.